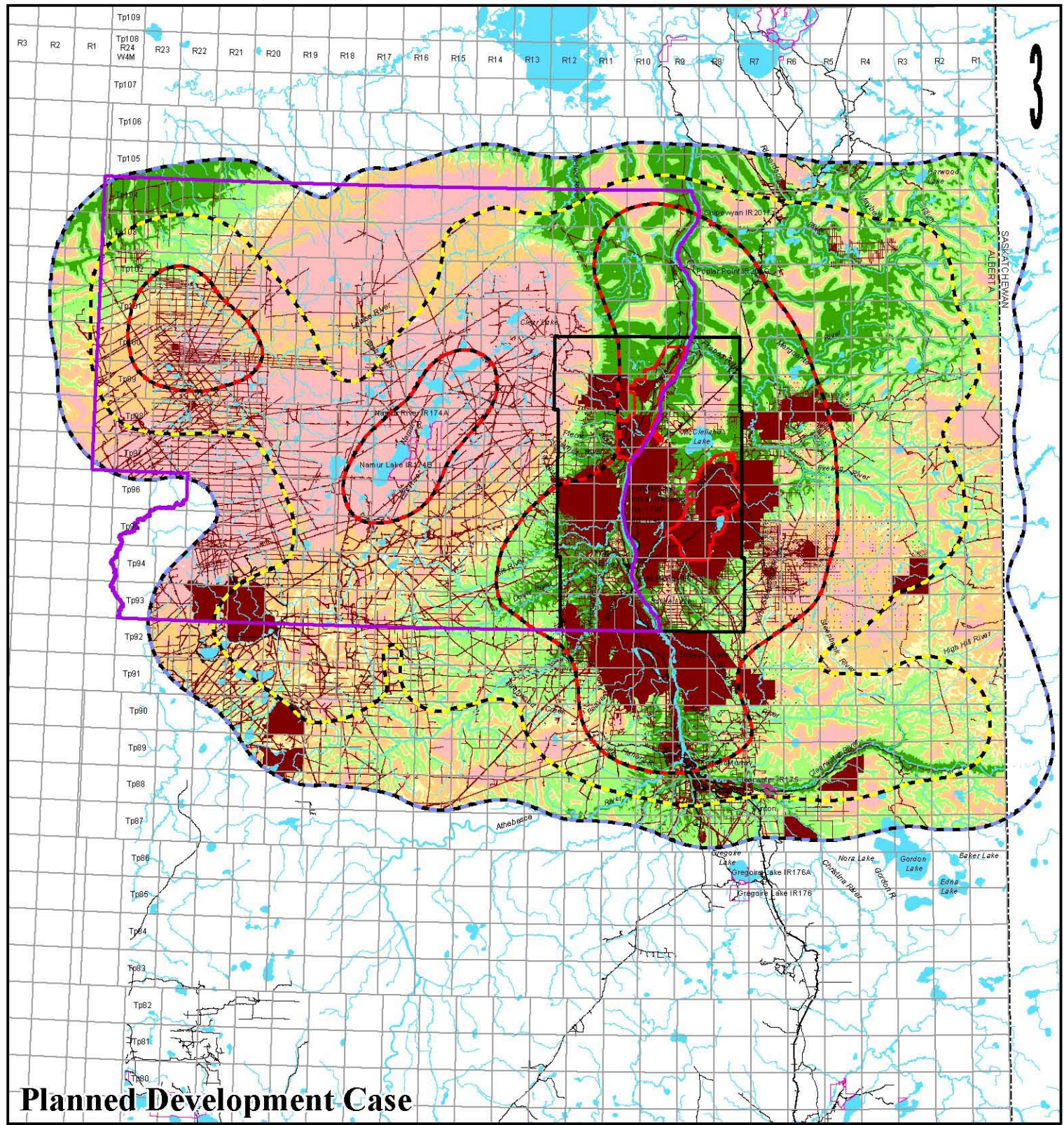
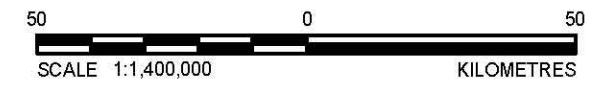


**Pre-Development Scenario**



**Planned Development Case**

LEGEND	
	WILDLIFE MANAGEMENT UNIT 531
	FORT MCKAY 40 TOWNSHIP BLOCK
	TERRESTRIAL LOCAL STUDY AREA
	INDIAN RESERVE
	PROVINCIAL BORDER
	OPEN WATER
	PUBLIC ROADWAY
	RAILROAD
	<b>DISTURBED</b> DISTURBANCE AREA
	LINEAR DISTURBANCE
	<b>CULTURALLY SIGNIFICANT ECOSYSTEM (CSE) AREA</b> INTENSE USE CSE (50% UTILIZATION DISTRIBUTION)
	MODERATE USE CSE (75% UTILIZATION DISTRIBUTION)
	LOW USE CSE (95% UTILIZATION DISTRIBUTION)
	<b>HABITAT SUITABILITY</b> HIGH
	MODERATE HIGH
	MODERATE
	MODERATE LOW
	LOW
	NIL
	CLOUD - NO DATA



**REFERENCE**  
 Alberta digital data obtained from AltaLIS Ltd. (September 2004), IHS Energy Ltd. (August 2006), used under license.  
 Projection: UTM Zone 12 Datum: NAD 83

PROJECT	JACKPINE MINE EXPANSION & PIERRE RIVER MINE PROJECT		
TITLE	MOOSE HABITAT SUITABILITY IN THE LARGE GAME CULTURALLY SIGNIFICANT ECOSYSTEM AREA		
PROJECT	No 08-1346-0006.5722	SCALE	AS SHOWN
DESIGN	BDW 13 Jan 2009	REVIEW	REV 0
GIS	BW 16 Oct 2009	<b>FIGURE 6-1</b>	
CHECK			
REVIEW			

I:\CLIENTS\SHELL\08-1346-0006\mapimg\mxd\5722\RSF\_HSV\Fort\_Mckay\_rsa\_hsi\_moose\_wmu531.mxd